

METAL  EXTERIORS

METAL LOC 1.5

Standing Seam Installation Guide



METAL  EXTERIORS



TABLE OF CONTENTS

OVERVIEW.....PAGE 2

HANDING AND STORAGE.....PAGE 3

QUALITY INSPECTIONS

HANDLING INSTRUCTIONS

STORAGE INSTRUCTIONS

AVOID COMMON ERRORS.....PAGE 4

CUTTING DO'S AND DON'TS

TOUCHING UP PANELS WITH PAINT

OIL CANNING

VENTILATION

ESSENTIAL PREPARTION.....PAGE 5

REQUIRED TOOLS

SAFETY

ACCESSORIES.....PAGE 6

FASTENER SELECTION.....PAGE 7

TRIM CHART.....PAGE 8

TRIM INSTALLATION.....PAGE 9-10

PANEL NOTCHING.....PAGE 11

PANEL INSTALLATION.....PAGE 12

CARE & MAINTENANCE.....PAGE 13

CLOSING.....PAGE 14



OVERVIEW

Thank you for taking the time to review the installation instructions for our Metal Loc 1.5.

In this guide we hope to give you all the information you will need to install this properly and efficiently.

In this guide we will share:

- The tools that are best suited for the job.
- Best cutting Practices.
- Safety Instructions.
- How to properly prep the substrate.
- Diagrams on how to properly install the trims.
- How to properly install the panels.

It is our hope that this guide will serve as an additional tool in your belt for an easy install and reference for any questions that may arise throughout the course of your project.

For any additional questions that aren't covered by this guide, please contact us at 419-896-2200, or by email at Orders@metalexteriors.com. Our staff would love to help answer any questions that you may have.



QUALITY INSPECTIONS

The Metal Exteriors team strives for accuracy in our orders and makes all effort to create timely customer service. Please check your order upon receiving it. In the event that you notice any discrepancies, please notify us right away so we can move swiftly to correct any mistakes that were made.

HANDLING INSTRUCTIONS

Handle your panels and trim with care to avoid damage. If you have longer panels, you may need more than one pick-up point or persons when lifting them from the trailer or transferring them across the jobsite by hand. Trim may be heavy and should be broken down and separated to avoid harm to the worker when moving these to where they are needed. Please do not attempt to lift beyond your capacity as this could cause injury as well as damaged material.

STORAGE INSTRUCTIONS

Metal Exteriors recommends having a covered area to store panels upon arrival at the jobsite. When ordering material, it is important to have panels delivered as close to the time they will be installed to avoid any damage from sitting on the jobsite. The longer panels are sitting the more likely they are to be damaged prior to installation.

If you do order materials in advance to have them ready when the time comes for installation, proper storage of the product is of utmost importance. Panels and trims should be stored in a covered, dry, and well-ventilated area. If panels are left in direct sunlight or exposed to moisture prior to installation it could cause a failure in the finish resulting in water spots or even surface rust. Panels should never be stored in direct contact with the ground.

AVOID COMMON ERRORS



CUTTING DO'S AND DON'TS

For cutting the panels in the field, tin snips are recommended. Cutting the steel causes “slivers” or small metal particles to collect on the edge of the panel. Failure to remove these will result in rust stains on the panels. Never cut any panels on top of existing panels.

Touching Up Panels With Paint

A factory baked on finish has been applied to the painted panels and trim components, some handling and installing of these product may result in minor nicks or scratches to the painted finish. Matching touch up paint from Metal Exterior is available. Use a small brush to apply touch up paint, a few coats may be needed in some situations.

OIL CANNING

Oil canning is defined as a visual waviness in the flat area of metal panels. Many factors can contribute to the degree of natural and unnatural oil canning, including deflection due to thermal movement, misaligned substrates or framing and improperly aligned fasteners.

Deforming of the panel caused by improper installation or substrate should be addressed by the appropriate contractor.

Ventilation

To prevent condensation from forming on the under inside of the roof, the use of vapor barriers and vented closures are necessary. Condensation occurs when moisture laden air comes in contact with a surface that has a temperature equal or below the dew point of the air. This can cause several potential issues, all of which can be avoided with the proper ventilation products and techniques. It is recommended that you discuss the proper product to use with your Metal Exterior’s Sales Representative.



REQUIRED TOOLS

To ensure a quality installation, it's important to have the right tools from the start. Whether you're a contractor or tackling the job yourself, the tools listed below will help you get it done efficiently and correctly.

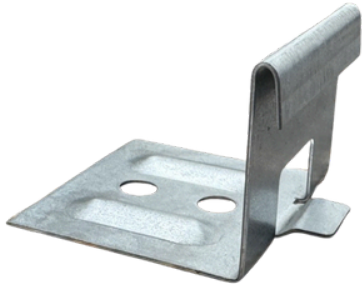
- Screw Gun
- Hand Shears
- Tape measure
- Rivet tool
- Chalk line
- Hand Benders
- Straight edge
- Hemming Tool
- *Left and right offset shears are recommended but are not required*
- *If using chalk, it is recommended that you use Blue and not Red due to the possibility of permanent staining or deterioration of the finish from "electric cell" affect.*

SAFETY

Whether the job you're doing is a roof or siding, safety should be your top priority. Safety hazards are all around a jobsite no matter what the job is and should be taken into careful consideration. Here are some tips to help you and your workers maintain a safe and injury free worksite.

- Maintain a clean clutter free workspace. Cut panels laying on the ground, extension or equipment cords.
- Beware of power lines when maneuvering panels.
- Always wear proper hearing and eye protection when cutting panels or trims. Gloves should be worn to protect you hands against sharp edges.
- Always be aware of your co-workers in the area. Make sure not to put them or yourself in danger.
- Be sure to follow state and local safety guidelines when installing this product.

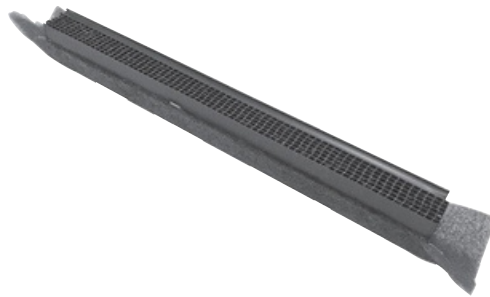
ACCESSORIES



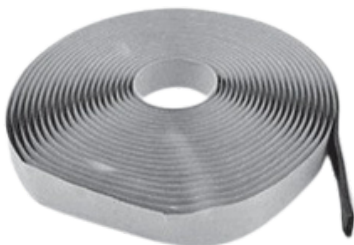
Panel Clip



Snap Z



Ridge Vent

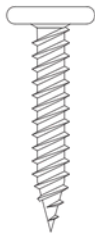


Caulk Tape

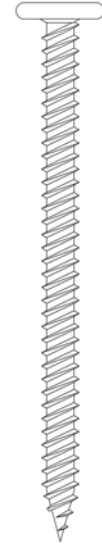


Roof Boot

Fastener Selection



1" Panhead Screw - 250 Ct. Bags



2.5" Panhead Screw - 250 Ct. Bags



Stainless Steel Pop Rivet - 100 Ct. Bags

PAN HEADS ARE AVAILABLE IN ADDITIONAL SIZES

TRIM Chart



Now that you're ready to start installing your trims, we've put together this reference chart to guide you.

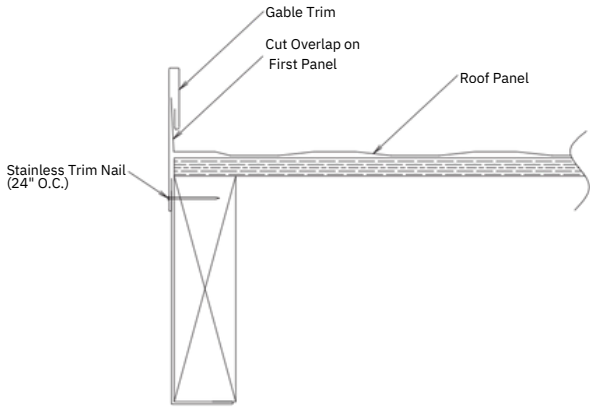
For runs of more than 10' 3" that require multiple length of trim, overlap the pieces by 1-1/2". The material is thin enough that overlaps will not be noticeable if done correctly.

We recommend attaching trims using panhead screws. Be sure to drive screws in securely-tight enough to hold, but not so tight that they warp the trim or the wall.

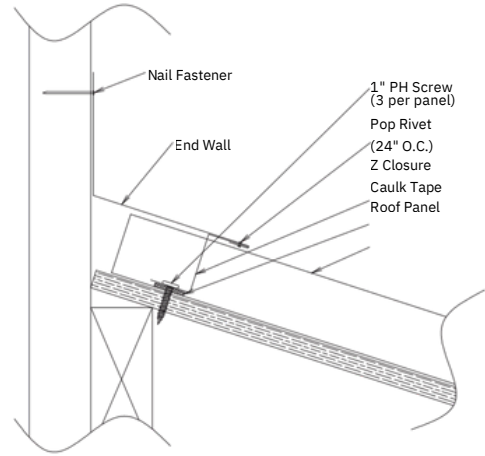
Important: Remove strippable film from panels and trims before installation.

RIDGE CAP SSRC(CLR)	RAKE TRIM SSRT(CLR)	DRIP EDGE ED(CLR) 1 INCH OVERHANG	1-PIECE GABLE TRIM SS1PG1.5(CLR)
STARTER BASE SSSBSP	END WALL SSEW(CLR)	SIDE WALL SSSW(CLR)	1.5 GABLE TRIM SSG1.5(CLR)
HIP CAP SSHC(CLR)	CHIMNEY FLASHING SSCF(CLR) 1" HEM	SNOW GUARD SSSG(CLR)	High Side Trim SSHS(CLR)
TRANSITION FLASHING SSTF(CLR)	Z CLOSURE SSZ1.5(CLR)	PERIMETER CLEAT SSPC(CLR)	VALLEY WV(CLR)
VALLEY OFFSET SSVOSP			

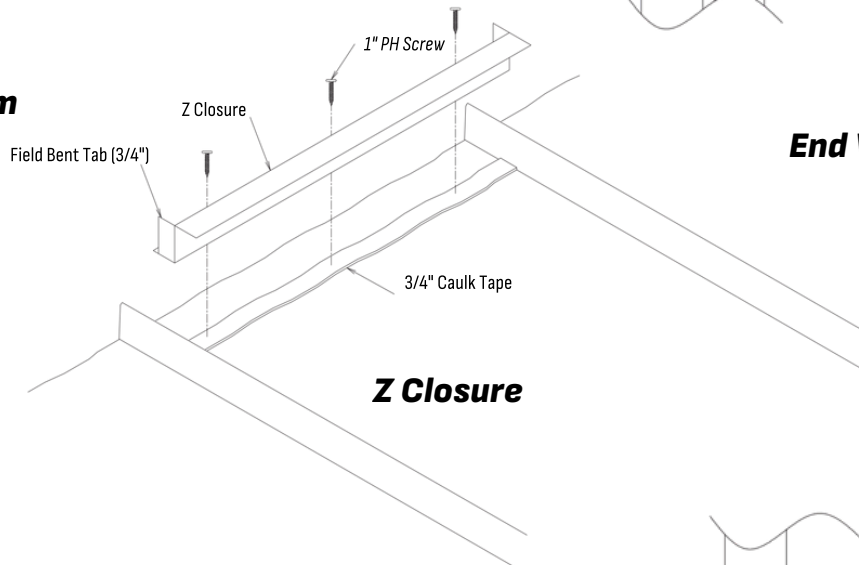
TRIM INSTALLATION



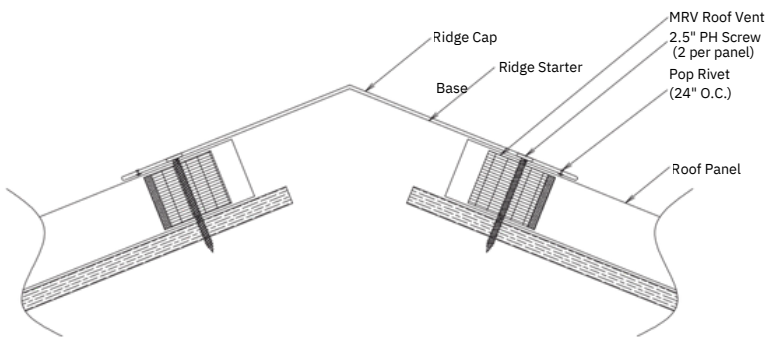
Gable Trim



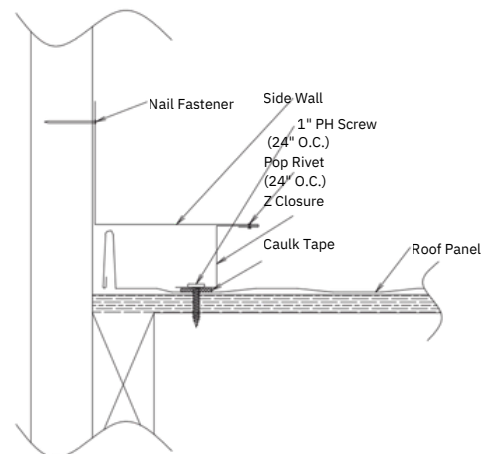
End Wall



Z Closure

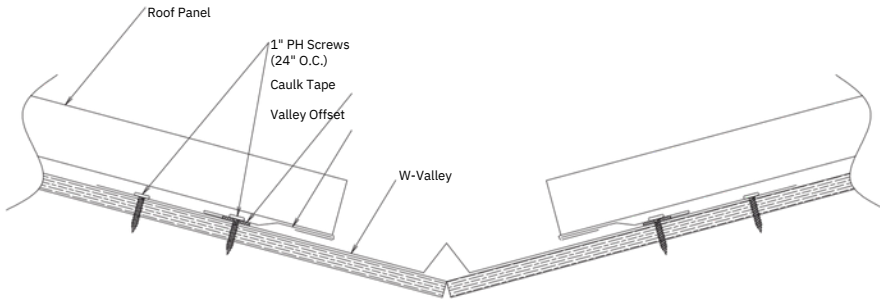


Ridge Cap

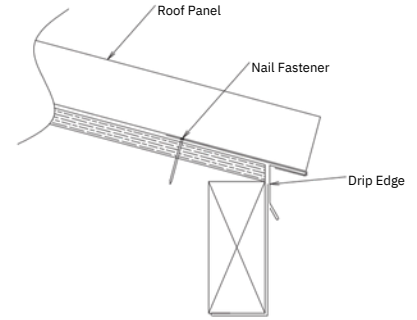


Side Wall

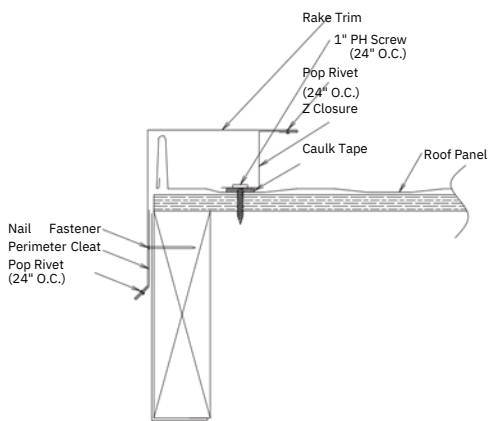
TRIM INSTALLATION



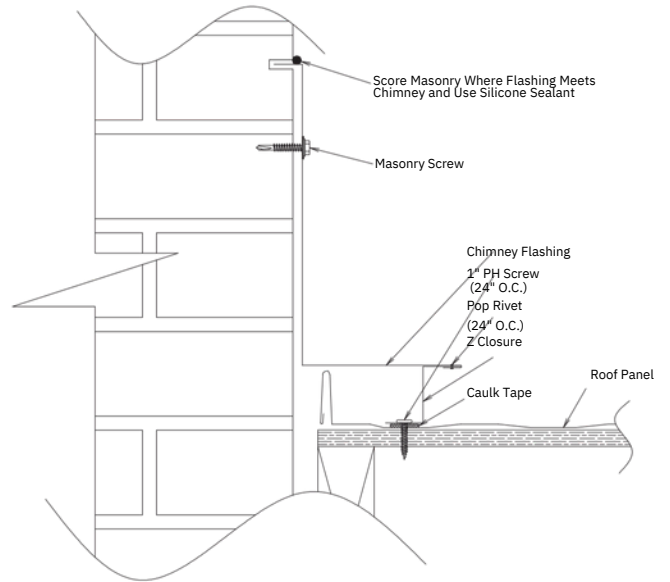
W-Valley



Drip Edge



Rake Trim

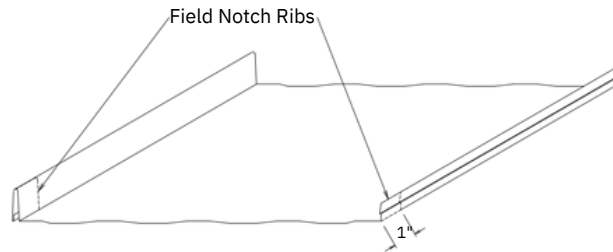


Chimney Flashing

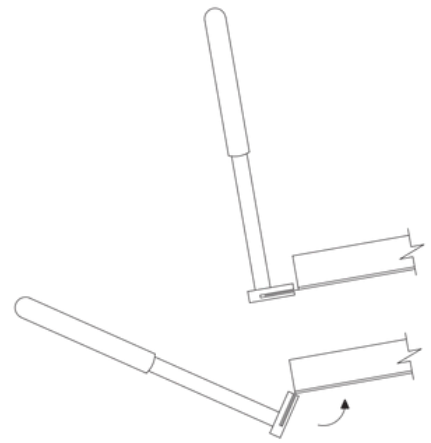
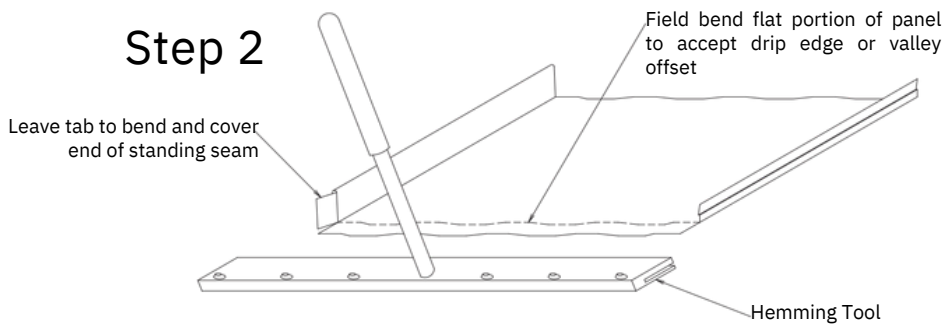
Panel Notching



Step 1

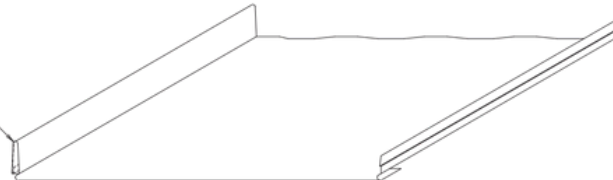


Step 2

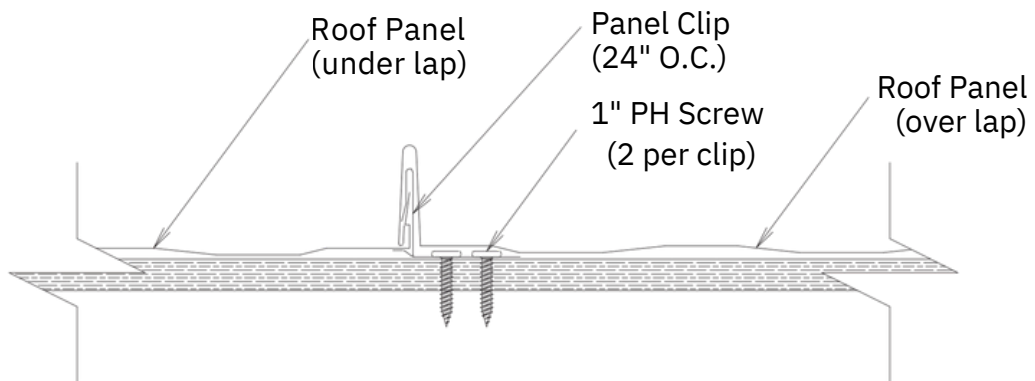
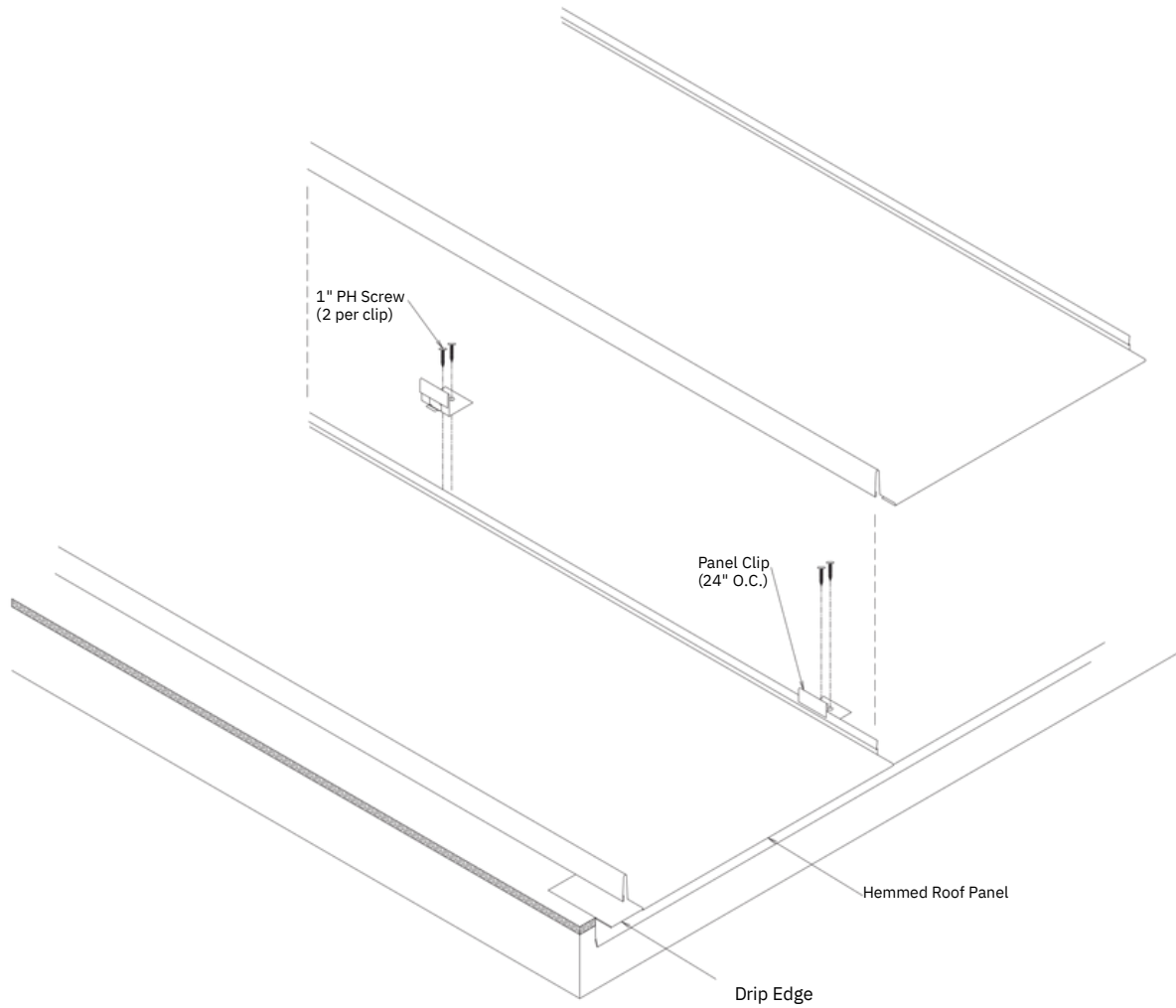


Step 3

Bend tab over to cover end of standing seam and trim parallel with seam



Panel Installation



Care & Maintenance



While factory-applied finishes are so durable that they will last many years longer than ordinary paints, it is desirable to clean them thoroughly on a routine basis. Apparent discoloration of the paint may occur when it has been exposed in dirt-laden atmospheres for long periods of time.

Slight chalking may also cause some change in appearance in areas of strong sunlight. A good cleaning will generally restore the appearance of these coatings and render repainting unnecessary. An occasional light cleaning will also help maintain an aesthetically pleasing appearance.

To maintain the original finish of the coated product, the only regular maintenance necessary is that of annual washing. Mild solutions of biodegradable cleaner or household ammonia will aid in the removal of most dirt, and the following are recommended levels:

- 1. One cup of Simple Green[®], or other non-toxic biodegradable cleaner, which contain less than 0.5% phosphate, dissolved into two gallons of warm water. NOTE: The use of detergents containing greater than 0.5% phosphate is not recommended for use in general cleaning of building panels. NEVER BLEND CLEANSERS OR DETERGENTS WITH BLEACH.**
- 2. One cup of household ammonia dissolved into five gallons of water (room temperature).**

Working from the bottom to the top of the coated panels, the panels may be washed with either solution. The use of a well-soaked cloth, sponge, brush (with very soft bristles) and clean water rinse is advised. Do not use a pressure washer.

We do not recommend the use of scouring powders or industrial solvents, since these agents may damage the film. Solvent-containing cleaners such as Fantastic[®], however, are very effective and can be used without concern.

If mildew or other fungal growth is a problem and cannot be removed as outlined above, household bleach, mixed at a concentration of one cup of bleach to five gallons of water, along with one cup of a mild soap (e.g., Ivory) to aid wetting, is recommended.

Once the coated product is washed, thorough rinsing with clear water is necessary to eliminate the possibility of residue. Failure to remove all residues from these cleaning steps may damage the film.

Closing



Thank you for taking the time to review this installation guide.
It's our pleasure to assist you in making your dream a reality.

If you have any questions beyond this guide, please reach out to us using the contact information listed at the bottom of each page.

We're here to help every step of the way — from choosing the right panel to ensuring your project is finished with confidence. Our goal is to make the process as simple and stress-free as possible, so you can enjoy the results for years to come.

All Metal Exteriors panels are coated with AkzoNobel's premium paint system, backed by a lifetime limited warranty.

This warranty covers film integrity, chalk, and fade — ensuring your finish retains its appearance and protection over time.

It is transferable to the next property owner (once within the first ten years) and applies to surface coating only when installed according to manufacturer guidelines.

Thank you for choosing Metal Exteriors — where lasting quality and craftsmanship come together.
The Metal Exteriors Team

METAL  **EXTERIORS**

***8511 SHILOH-NORWALK RD
SHILOH, OHIO 44878***

419-896-2200

ORDERS@METALEXTERIORS.COM