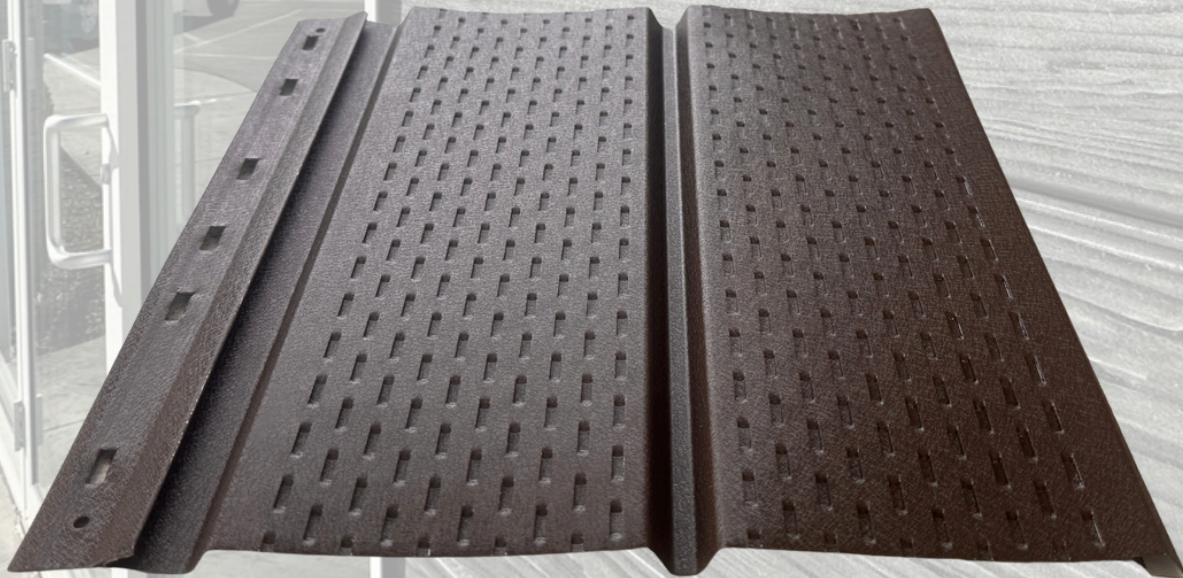


METAL  **EXTERIORS**

METAL SOFFIT



***INSTALLATION
GUIDE***

METAL  **EXTERIORS**



TABLE OF CONTENTS

OVERVIEW.....PAGE 2

HANDING AND STORAGE.....PAGE 3

QUALITY INSPECTIONS

HANDLING INSTRUCTIONS

STORAGE REQUIREMENTS

ESSENTIAL PREPARTION.....PAGE 4

REQUIRED TOOLS

SAFETY

AVOID COMMON ERRORS.....PAGE 5

CUTTING DO'S AND DON'TS

OIL CANNING

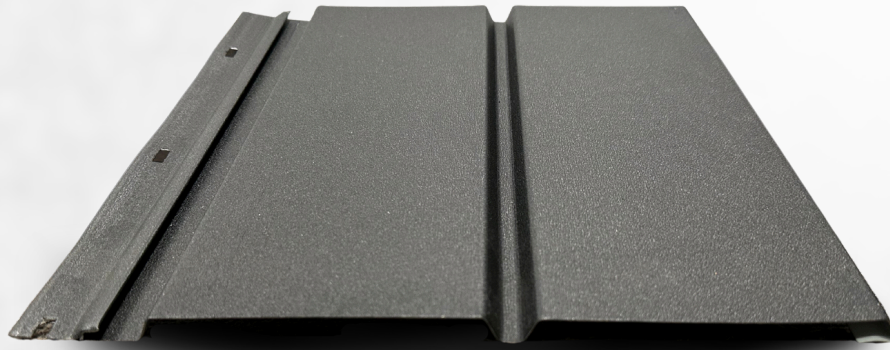
TRIM CHART.....PAGE 6

TRIM INSTALLATION.....PAGE 7

PANEL INSTALLATION.....PAGE 8

CARE & MAINTENANCE.....PAGE 9

CLOSING.....PAGE 10



0.5 IN



10 IN. COVERAGE | 12 FT. LENGTHS

OVERVIEW

Thank you for taking the time to review the installation instructions for our Soffit Panel.

In this guide we hope to give you all the information you will need to install this properly and efficiently.

In this guide we will share:

- The tools that are best suited for the job.
- Best cutting Practices.
- Safety Instructions.
- How to properly prep the wall.
- Diagrams on how to properly install the trims.
- How to properly install the panel.

It is our hope that this guide will serve as an additional tool in your belt for an easy install and reference for any questions that may arise throughout the course of your project.

For any additional questions that aren't covered by this guide, please contact us at 419-896-2200, or by email at Orders@metalexteriors.com. Our staff would love to help answer any questions that you may have.

HANDLING AND STORAGE



QUALITY INSPECTIONS

The Metal Exteriors team strives for accuracy in our orders and makes all effort to create timely customer service. Please check your order upon receiving it. In the event that you notice any discrepancies, please notify us right away so we can move swiftly to correct any mistakes that were made.

HANDLING INSTRUCTIONS

Handle your panels and trim with care to avoid damage. If you have longer panels, you may need more than one pick-up point when lifting them from the trailer or transferring them across the jobsite by hand. Trim and batten bundles may be heavy and should be broken down and separated to avoid harm to the worker when moving these to where they are needed. Please do not attempt to lift beyond your capacity as this could cause injury as well as damaged material.

STORAGE REQUIREMENTS

Metal Exteriors recommends having a covered area to store panels upon arrival at the jobsite. When ordering material, it is important to have panels delivered as close to the time they will be installed to avoid any damage from sitting on the jobsite. The longer panels are sitting the more likely they are to be damaged prior to installation.

If you do order materials in advance to have them ready when the time comes for installation, proper storage of the product is of utmost importance. Panels and trims should be stored in a covered, dry, and well-ventilated area. If panels are left in direct sunlight or exposed to moisture prior to installation it could cause a failure in the finish resulting in water spots or even surface rust. Panels should never be stored in direct contact with the ground.



REQUIRED TOOLS

To ensure a quality installation, it's important to have the right tools from the start. Whether you're a contractor or tackling the job yourself, the tools listed below will help you get it done efficiently and correctly.

- Screw Gun
- Hand Shears
- Tape measure
- Rivet tool
- Chalk line
- Hand Benders
- Straight edge
- Hammer
- Square
- *Left and right offset shears are recommended but are not required*
- *If using chalk, it is recommended that you use Blue and not Red due to the possibility of permanent staining or deterioration of the finish from "electric cell" affect.*

SAFETY

Whether the job you're doing is a roof or siding, safety should be your top priority. Safety hazards are all around a jobsite no matter what the job is and should be taken into careful consideration. Here are some tips to help you and your workers maintain a safe and injury free worksite.

- Maintain a clean clutter free workspace. Cut panels laying on the ground, extension or equipment cords.
- Beware of power lines when maneuvering panels.
- Always wear proper hearing and eye protection when cutting panels or trims. Gloves should be worn to protect you hands against sharp edges.
- Always be aware of your co-workers in the area. Make sure not to put them or yourself in danger.
- Be sure to follow state and local safety guidelines when installing this product.

AVOID COMMON ERRORS



CUTTING DO'S AND DON'TS

When cutting the panels in the field, here are some helpful tips to avoid damage. If you are using a circular saw to make your cuts, always cut from the back side of the panel.

This will ensure that no hot shavings come in contact with the finish and mar the paint. Always remember to wear proper eye and ear protection when cutting steel. Hand shears and Nibblers can also be used to cut these panels as well.

The same would apply to these options as well, all shavings should be removed from the panels to not damage the finish. Failure to remove these will result in rust stains on the panels. Never cut any panels on top of existing panels.

PREPPING THE OVERHANG

Before you start your job, the first step is prepping the wall. This panel may only be installed on a solid substrate.

- For substrate, use a minimum of 7/16-inch OSB.
- Apply Zip System Flashing tape on the seams of the substrate for additional protection.
- Always cover the wall with house wrap after installing the substrate to protect against water damage.

Once these steps are complete you're ready to begin installing the trims for your siding.

TRIM CHART



Now that you're ready to start installing your trims, we've put together this reference chart to guide you.

For runs of more than 10' 3" that require multiple length of trim, overlap the pieces by 1-1/2". The material is thin enough that overlaps will not be easily noticeable if done correctly.

We recommend attaching trims using panhead screws. Be sure to drive screws in securely-tight enough to hold, but not so tight that they warp the trim or the wall.

Important: Remove strippable film from panels and trims before installation.

<p>F&J COMBO TRIM</p> <p>FJ58(CLR)</p>	<p>F CHANNEL</p> <p>58FC(CLR)</p>	<p>FASCIA TRIM</p> <p>(x) = VARIABLE</p> <ul style="list-style-type: none"> • 3-1/2" • 5-1/2" • 6" • 7-1/4" <p>(CUSTOM BY REQUEST)</p> <p>F(LN)(CLR)</p>
<p>J CHANNEL</p> <p>58J(CLR)</p>	<p>METAL SOFFIT RECEIVER</p> <p>MSR(CLR)</p>	

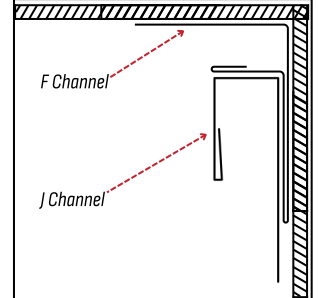
TRIM INSTALLATION



F CHANNEL & J CHANNEL

The F-Channel is designed to act as a receiver for your soffit. To install, mark a line on your wall level with the bottom of your fascia board. (Easily done with a level or a square) This is where the very top of you F channel needs to be. The J channel can then be installed directly under the F channel as shown.

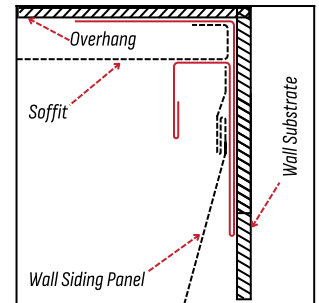
FIGURE 8



F&J COMBO TRIM

The F&J Combo trim is designed to replace both the J channel at the top of your wall as well as the F channel. To install, mark a line on your wall level with the bottom of your fascia board. This is where the very top of you F&J trim needs to be.

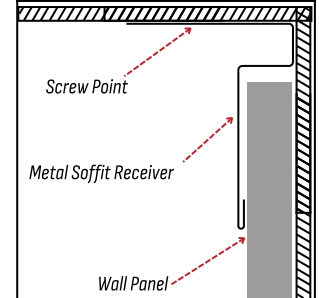
FIGURE 7



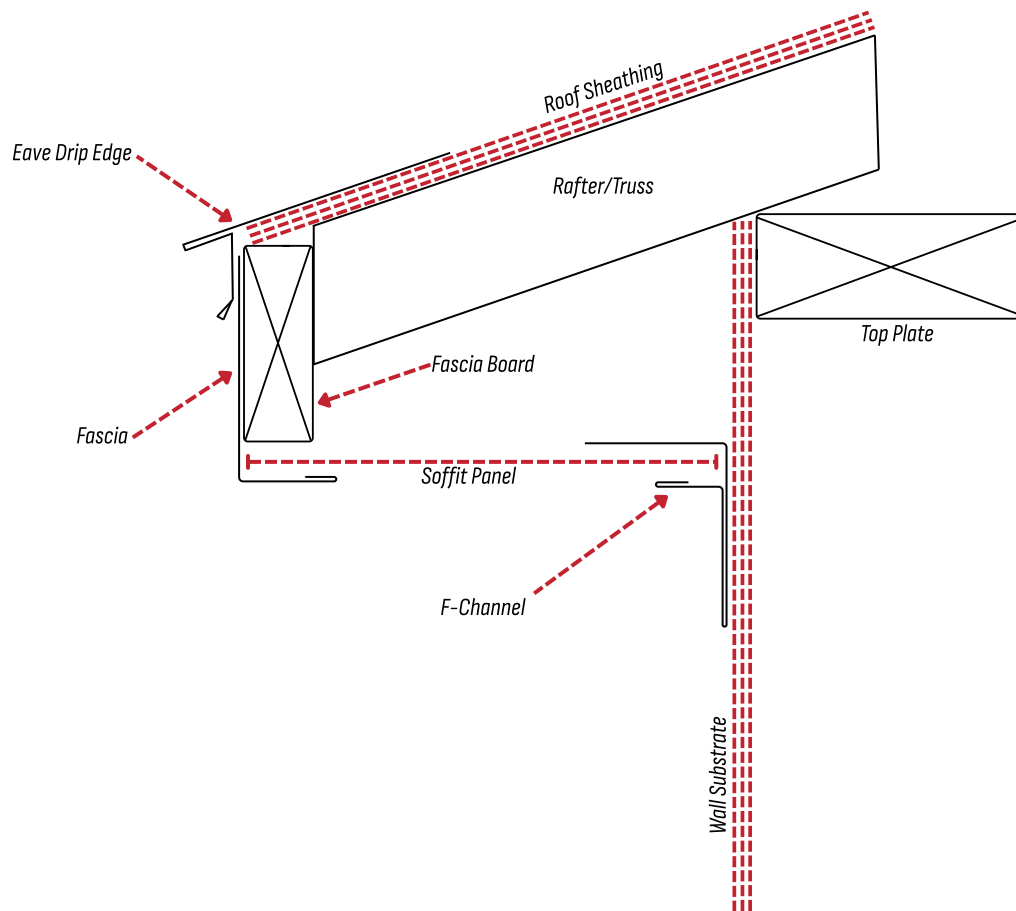
METAL SOFFIT RECEIVER

The Metal Soffit Receiver is designed to replace both the J channel at the top of your wall as well as the F channel. It is best used with ceiling joists or a solid ceiling substrate. To install, fasten at the "Screw point" with the trim pushed into the corner as shown. (When using a horizontal hidden fastener siding panel, the Soffit Receiver should be installed after the siding to cover the fastener on the top panel.)

FIGURE 8



METAL SOFFIT INSTALLATION



Follow the steps below to ensure each trim piece is installed in the correct order:

1. **F-Channel:** Install the F-channel with the top edge of the trim aligned level with the bottom of the fascia board, as shown in the diagram. Ensure it is fastened securely and runs straight, as this will serve as the receiving channel for the soffit panels and help maintain a clean, uniform finish.
2. **Soffit panel:** Install the pre-cut soffit panels one at a time, making sure each panel is fully locked into the previous one before securing. Use your preferred fastener—either a screw or nail—to attach the panels to the fascia board, ensuring they sit flat and remain securely in place. Take care not to overdrive the fasteners, as this can distort the panel and affect the final appearance.
3. **Fascia Trim:** The fascia trim is installed last, tucked behind the drip edge with the 1.5" horizontal leg fitting under the soffit panels to hold them securely in place and create a clean, sealed finish. Fasten the fascia by driving color-matched screws or nails through the face or up through the 1.5" leg.

Care & Maintenance



While factory-applied finishes are so durable that they will last many years longer than ordinary paints, it is desirable to clean them thoroughly on a routine basis. Apparent discoloration of the paint may occur when it has been exposed in dirt-laden atmospheres for long periods of time.

Slight chalking may also cause some change in appearance in areas of strong sunlight. A good cleaning will generally restore the appearance of these coatings and render repainting unnecessary. An occasional light cleaning will also help maintain an aesthetically pleasing appearance.

To maintain the original finish of the coated product, the only regular maintenance necessary is that of annual washing. Mild solutions of biodegradable cleaner or household ammonia will aid in the removal of most dirt, and the following are recommended levels:

- 1. One cup of Simple Green[®], or other non-toxic biodegradable cleaner, which contain less than 0.5% phosphate, dissolved into two gallons of warm water. NOTE: The use of detergents containing greater than 0.5% phosphate is not recommended for use in general cleaning of building panels. NEVER BLEND CLEANSERS OR DETERGENTS WITH BLEACH.**
- 2. One cup of household ammonia dissolved into five gallons of water (room temperature).**

Working from the bottom to the top of the coated panels, the panels may be washed with either solution. The use of a well-soaked cloth, sponge, brush (with very soft bristles) and clean water rinse is advised. Do not use a pressure washer.

We do not recommend the use of scouring powders or industrial solvents, since these agents may damage the film. Solvent-containing cleaners such as Fantastic[®], however, are very effective and can be used without concern.

If mildew or other fungal growth is a problem and cannot be removed as outlined above, household bleach, mixed at a concentration of one cup of bleach to five gallons of water, along with one cup of a mild soap (e.g., Ivory) to aid wetting, is recommended.

Once the coated product is washed, thorough rinsing with clear water is necessary to eliminate the possibility of residue. Failure to remove all residues from these cleaning steps may damage the film.

Closing



Thank you for taking the time to review this installation guide.
It's our pleasure to assist you in making your dream a reality.

If you have any questions beyond this guide, please reach out to us using the contact information listed at the bottom of each page.

We're here to help every step of the way — from choosing the right panel to ensuring your project is finished with confidence. Our goal is to make the process as simple and stress-free as possible, so you can enjoy the results for years to come.

All Metal Exteriors panels are coated with AkzoNobel's premium paint system, backed by a lifetime limited warranty.

This warranty covers film integrity, chalk, and fade — ensuring your finish retains its appearance and protection over time.

It is transferable to the next property owner (once within the first ten years) and applies to surface coating only when installed according to manufacturer guidelines.

Thank you for choosing Metal Exteriors — where lasting quality and craftsmanship come together.
The Metal Exteriors Team

METAL  **EXTERIORS**

8511 SHILOH-NORWALK RD

SHILOH, OHIO 44878

419-896-2200

ORDERS@METAEXTERIORS.COM