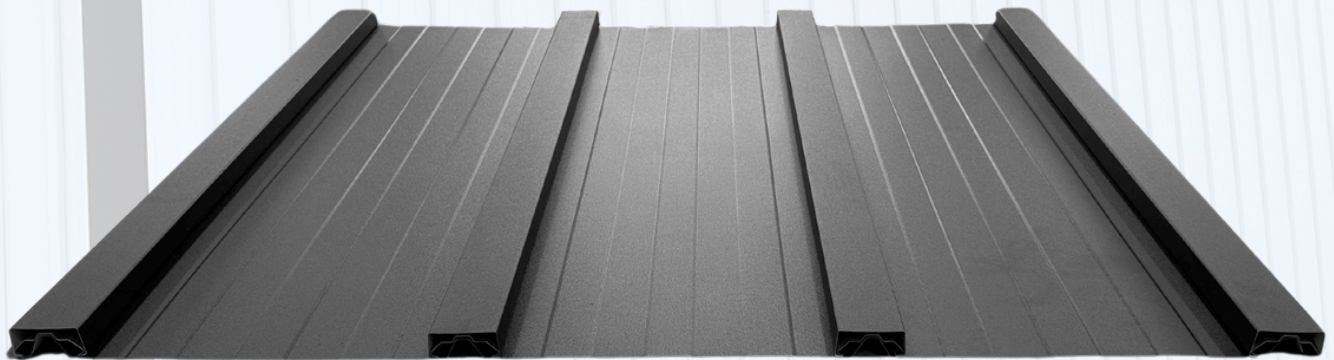


# ***ELITE BATTEN***



**PATENT PENDING**



## ***INSTALLATION GUIDE***



# **TABLE OF CONTENTS**

**OVERVIEW.....PAGE 2**

**HANDING AND STORAGE.....PAGE 3**

**QUALITY INSPECTIONS**

**HANDLING INSTRUCTIONS**

**STORAGE REQUIREMENTS**

**ESSENTIAL PREPARTION.....PAGE 4**

**REQUIRED TOOLS**

**SAFETY**

**AVOID COMMON ERRORS.....PAGE 5**

**CUTTING DO'S AND DON'TS**

**OIL CANNING**

**PREPPING THE WALLS**

**TRIM CHART.....PAGE 6**

**TRIM INSTALLATION.....PAGE 7**

**PANEL INSTALLATION.....PAGE 8**

**BATTEN STRIP INSTALLATION.....PAGE 9**

**CARE & MAINTENANCE.....PAGE 10**

**CLOSING.....PAGE 11**



# **OVERVIEW**

Thank you for taking the time to review the installation instructions for our Elite Batten.

In this guide we hope to give you all the information you will need to install this properly and efficiently.

In this guide we will share:

- The tools that are best suited for the job.
- Best cutting Practices.
- Safety Instructions.
- How to properly prep the wall.
- Diagrams on how to properly install the trims.
- How to properly install the panel and battens.

It is our hope that this guide will serve as an additional tool in your belt for an easy install and reference for any questions that may arise throughout the course of your project.

For any additional questions that aren't covered by this guide, please contact us at 419-896-2200, or by email at [Orders@metalexteriors.com](mailto:Orders@metalexteriors.com). Our staff would love to help answer any questions that you may have.

# **HANDLING AND STORAGE**



## **QUALITY INSPECTIONS**

The Metal Exteriors team strives for accuracy in our orders and makes all effort to create timely customer service. Please check your order upon receiving it. In the event that you notice any discrepancies, please notify us right away so we can move swiftly to correct any mistakes that were made.

## **HANDLING INSTRUCTIONS**

Handle your panels and trim with care to avoid damage. If you have longer panels, you may need more than one pick-up point when lifting them from the trailer or transferring them across the jobsite by hand. Trim and batten bundles may be heavy and should be broken down and separated to avoid harm to the worker when moving these to where they are needed. Please do not attempt to lift beyond your capacity as this could cause injury as well as damaged material.

## **STORAGE INSTRUCTIONS**

Metal Exteriors recommends having a covered area to store panels upon arrival at the jobsite. When ordering material, it is important to have panels delivered as close to the time they will be installed to avoid any damage from sitting on the jobsite. The longer panels are sitting the more likely they are to be damaged prior to installation.

If you do order materials in advance to have them ready when the time comes for installation, proper storage of the product is of utmost importance. Panels and trims should be stored in a covered, dry, and well-ventilated area. If panels are left in direct sunlight or exposed to moisture prior to installation it could cause a failure in the finish resulting in water spots or even surface rust. Panels should never be stored in direct contact with the ground.



## REQUIRED TOOLS

To ensure a quality installation, it's important to have the right tools from the start. Whether you're a contractor or tackling the job yourself, the tools listed below will help you get it done efficiently and correctly.

- Screw Gun
- Hand Shears
- Tape measure
- Rivet tool
- Chalk line
- Nibblers
- Hand Benders
- Straight edge
- *Left and right offset shears are recommended but are not required*
- *If using chalk, it is recommended that you use Blue and not Red due to the possibility of permanent staining or deterioration of the finish from "electric cell" affect.*

## SAFETY

Whether the job you're doing is a roof or siding, safety should be your top priority. Safety hazards are all around a jobsite no matter what the job is and should be taken into careful consideration. Here are some tips to help you and your workers maintain a safe and injury free worksite.

- Maintain a clean clutter free workspace. Cut panels laying on the ground, extension or equipment cords.
- Beware of power lines when maneuvering panels.
- Always wear proper hearing and eye protection when cutting panels or trims. Gloves should be worn to protect you hands against sharp edges.
- Always be aware of your co-workers in the area. Make sure not to put them or yourself in danger.
- Be sure to follow state and local safety guidelines when installing this product.

# **AVOID COMMON ERRORS**



## **CUTTING DO'S AND DON'TS**

For cutting the panels in the field, tin snips or electric nibblers are recommended. Cutting the steel causes “slivers” or small metal particles to collect on the edge of the panel. Failure to remove these will result in rust stains on the panels. Never cut any panels on top of existing panels.

## **OIL CANNING**

Oil canning is defined as a visual waviness in the flat area of metal panels. Many factors can contribute to the degree of natural and unnatural oil canning, including deflection due to thermal movement, misaligned substrates or framing and improperly aligned fasteners.

Deforming of the panel caused by improper installation or substrate should be addressed by the appropriate contractor.

## **PREPPING THE WALLS**

Before you start your job, the first step is prepping the wall. Panels can be installed on wall girts as well as a solid substrate.

- Whether using wood or metal girts. We recommend spacing them two feet on center.
- For wood girts, use 2x4's, with the bottom girt being pressure-treated and no smaller than a 2x6.
- For substrate, use a minimum of 7/16-inch OSB.
- Always cover the wall with house wrap after installing the substrate to protect against water damage.

Once these steps are complete you're ready to begin installing the trims for your siding.

# TRIM CHART



Now that you're ready to start installing your trims, we've put together this reference chart to guide you.

For runs of more than 10' 3" that require multiple length of trim, overlap the pieces by 1-1/2". The material is thin enough that overlaps will not be noticeable.

We recommend attaching trims using panhead screws. Be sure to drive screws in securely-tight enough to hold, but not so tight that they warp the trim or the wall.

**Important:** Remove strippable film from panels and trims before installation.

<p><b>OUTSIDE CORNER</b></p> <p>EBC(LN)(CLR) LN=10,12,14,16,18,20</p>	<p><b>INSIDE CORNER</b></p> <p>EBIC(LN)(CLR) LN=10,12,14,16,18,20</p>	<p><b>DOOR POST</b></p> <p>STDP(CLR)</p>	<p><b>J Channel</b></p> <p>1J(CLR)</p>
<p><b>Double Angle</b></p> <p>1DA(CLR)</p>	<p><b>Drip Flashing</b></p> <p>1DF(CLR)</p>	<p><b>RAT GUARD</b></p> <p>1RG(CLR)</p>	<p><b>UTILITY TRIM</b></p> <p>STUT(CLR)</p>
<p><b>Band Board 3-1/2"</b></p> <p>1BB3(CLR)</p>	<p><b>Band Board 5-1/2"</b></p> <p>1BB5(CLR)</p>	<p><b>OVERHEAD DOOR TRIM</b></p> <p>1OH(LN)(CLR) LN=10,12,14,16,18</p>	<p><b>ELITE BATTEN STRIP</b></p> <p>EB(CLR) EBC</p>

# TRIM INSTALLATION



## OUTSIDE CORNERS

Outside corners should be installed before fastening any panels, as the nailing flange should be hidden behind the finished panels. Outside corners have a built in J-Channel to receive the panels. They will require a utility trim if there is a cut edge on the panel. ( See Illustration 1-2 )

- We do not recommend splicing outside or inside corners.( Custom sizes are available by request )

## UTILITY TRIM

When panels butt up against the side of a window or door opening, utility trim should be installed inside the J-channel to protect the cut edge of the panel, and to prevent chattering.

( See Illustration 2 )

## RAT GUARD (STARTER STRIP)

Rat Guard serves as the base trim at the bottom of the wall. To fasten it, use a panhead screw directly on the wall substrate or girt. After that, install the panel over the Rat Guard, resting on the trim's "ledge".

(See Illustration 3 )

## DRIP FLASHING (DRIP CAP)

Drip flashing serves as a secondary option for base trim at the bottom of the wall. This trim should be used in applications shown in Illustration 4. To fasten it, use a panhead screw directly on the wall substrate or girt. After that, install the panel, resting on the trim's "ledge".(See Illustration 4 )

The Drip Cap is also used over framed openings like doors and windows to allow water to run off without pooling or siphoning

FIGURE 1

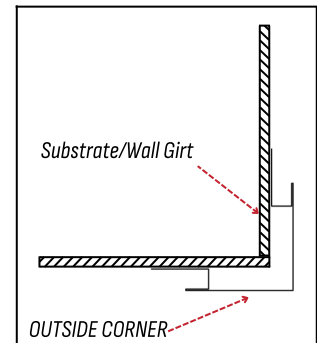


FIGURE 2

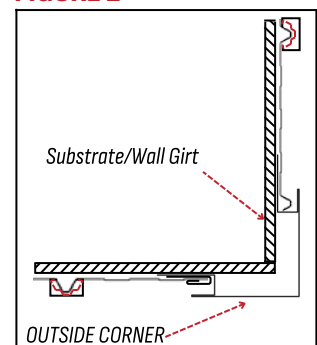


FIGURE 3

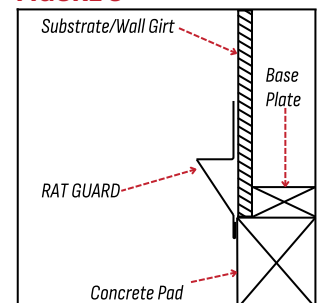
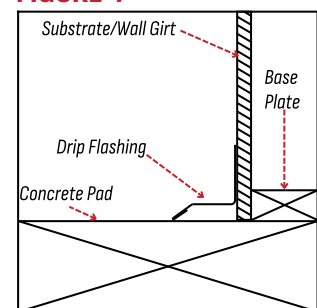


FIGURE 4



# PANEL INSTALLATION



Familiarize yourself with all installation instructions before starting work. Before beginning installation, you should examine the substrate or framing to ensure that all supporting members are straight, level, and plumb to avoid any panel distortion.

Substructures should be designed to meet all necessary code requirements.

Some field cutting and fitting of panels and trims is to be expected by the installer and minor field corrections are a part of normal installation work.

It is the responsibility of the installer to ensure a suitable substrate prior to the application of the Elite Batten Siding

## NOW WE CAN GET STARTED YOUR INSTALLATION

- Choose which side of the wall you would like to start on.
- See Illustration 2 for required screw pattern. Screws and clips should be placed two feet apart on each rib vertically. The top clip should be keep 4-6 inches down from the top of the panel.
- We recommend installing all base panels before starting on the batten strips. (You will not be able to remove the batten strips to make unforeseen adjustments once installed.)
- There are two options we recommend for installing the first panel. Both are demonstrated in Illustration 1.
  1. Simply slide the overlapping rib into the corner J-channel without a batten attached. ( This provides a clean color matched finish inside the J-channel.)
  2. Fit the corner J-channel with a utility trim as shown. Cut the panel top to bottom at a location of your choosing, Slide the cut edge into the utility trim. Using this method will expose the primer on the inside of the J-channel making it visible.
- Now that you're ready for the next panel: Please follow example of Illustration 3. Each panel has an overlap & an underlap. Achieving this step correctly is the key to a long lasting seam and a consistent appearance.
- Finishing panel: It can be difficult to predict exactly where and how you'll have to finish each wall face. However, Illustration 1 demonstrates both starting and finishing methods.

FIGURE 1

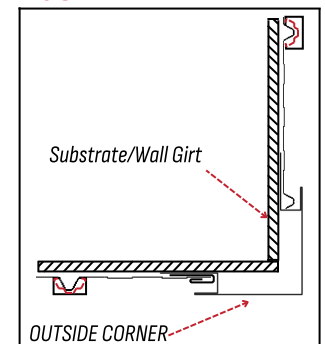


FIGURE 2

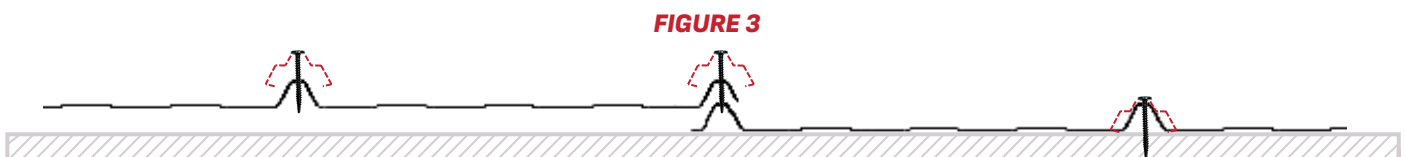


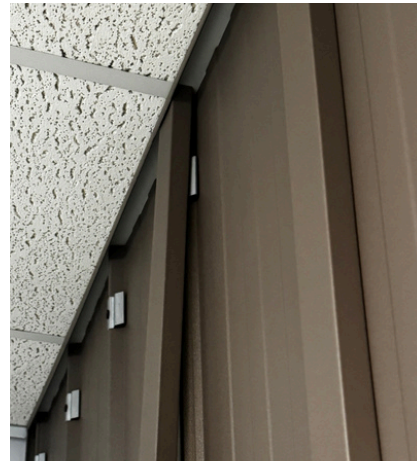
FIGURE 3

# BATTEN STRIP INSTALLATION



Congratulations, you're ready for the last step.

1. Start by tucking the batten strip into the top J-channel as shown.
  2. Next, apply firm pressure to the batten strip, clipping in one side first and then the other. Work carefully, focusing on one or two clips at a time, and continue this process from the top down until the entire strip is securely locked in place.
- If you need to splice a batten strip: Here are a few ways we recommend doing so.
    1. Simply splice two pieces on a single clip. (This is the most efficient method and provides the cleanest appearance.)
    2. Notch the batten strip making it possible to overlap the bottom piece. It is always recommended to place clips on each side of a splice using this method.



# Care & Maintenance



While factory-applied finishes are so durable that they will last many years longer than ordinary paints, it is desirable to clean them thoroughly on a routine basis. Apparent discoloration of the paint may occur when it has been exposed in dirt-laden atmospheres for long periods of time.

Slight chalking may also cause some change in appearance in areas of strong sunlight. A good cleaning will generally restore the appearance of these coatings and render repainting unnecessary. An occasional light cleaning will also help maintain an aesthetically pleasing appearance.

To maintain the original finish of the coated product, the only regular maintenance necessary is that of annual washing. Mild solutions of biodegradable cleaner or household ammonia will aid in the removal of most dirt, and the following are recommended levels:

- 1. One cup of Simple Green<sup>®</sup>, or other non-toxic biodegradable cleaner, which contain less than 0.5% phosphate, dissolved into two gallons of warm water. NOTE: The use of detergents containing greater than 0.5% phosphate is not recommended for use in general cleaning of building panels. NEVER BLEND CLEANSERS OR DETERGENTS WITH BLEACH.**
- 2. One cup of household ammonia dissolved into five gallons of water (room temperature).**

Working from the bottom to the top of the coated panels, the panels may be washed with either solution. The use of a well-soaked cloth, sponge, brush (with very soft bristles) and clean water rinse is advised. Do not use a pressure washer.

We do not recommend the use of scouring powders or industrial solvents, since these agents may damage the film. Solvent-containing cleaners such as Fantastic<sup>®</sup>, however, are very effective and can be used without concern.

If mildew or other fungal growth is a problem and cannot be removed as outlined above, household bleach, mixed at a concentration of one cup of bleach to five gallons of water, along with one cup of a mild soap (e.g., Ivory) to aid wetting, is recommended.

Once the coated product is washed, thorough rinsing with clear water is necessary to eliminate the possibility of residue. Failure to remove all residues from these cleaning steps may damage the film.

# Closing



Thank you for taking the time to review this installation guide.  
It's our pleasure to assist you in making your dream a reality.

If you have any questions beyond this guide, please reach out to us using the contact information listed at the bottom of each page.

We're here to help every step of the way — from choosing the right panel to ensuring your project is finished with confidence. Our goal is to make the process as simple and stress-free as possible, so you can enjoy the results for years to come.

All Metal Exteriors panels are coated with AkzoNobel's premium paint system, backed by a lifetime limited warranty.

This warranty covers film integrity, chalk, and fade — ensuring your finish retains its appearance and protection over time.

It is transferable to the next property owner (once within the first ten years) and applies to surface coating only when installed according to manufacturer guidelines.

Thank you for choosing Metal Exteriors — where lasting quality and craftsmanship come together.  
*The Metal Exteriors Team*

**METAL**  **EXTERIORS**

**8511 SHILOH-NORWALK RD**

**SHILOH, OHIO 44878**

**419-896-2200**

**ORDERS@METAEXTERIORS.COM**