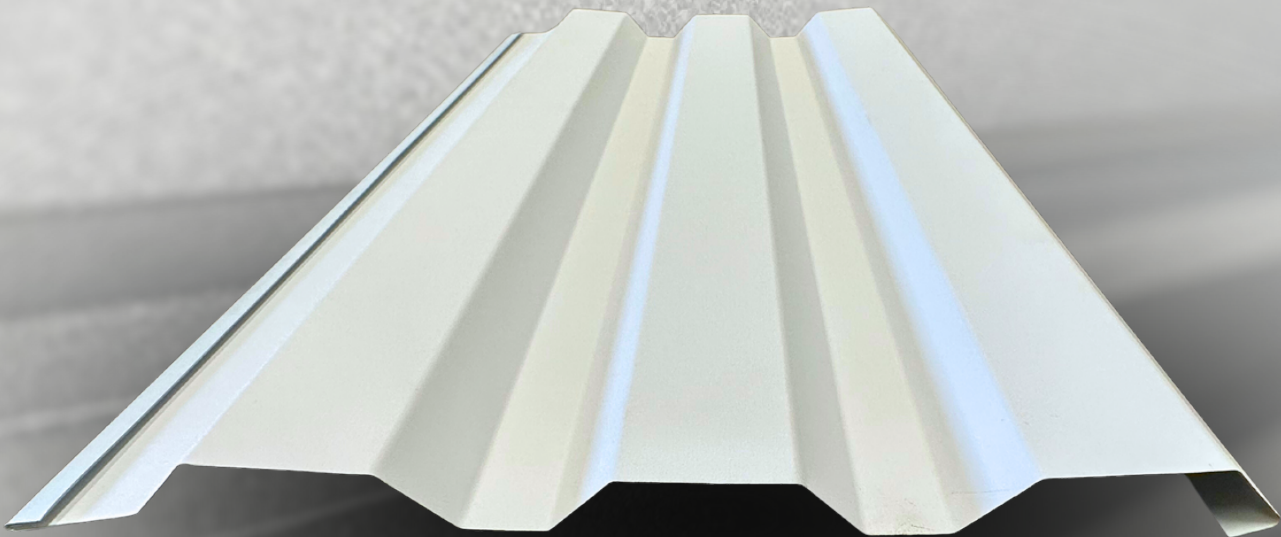


METAL  EXTERIORS

WAVE **PANEL**

SIDING SYSTEM



STYLISH 7/8 INCH PROFILE



10 FT 3 IN PANEL LENGTH

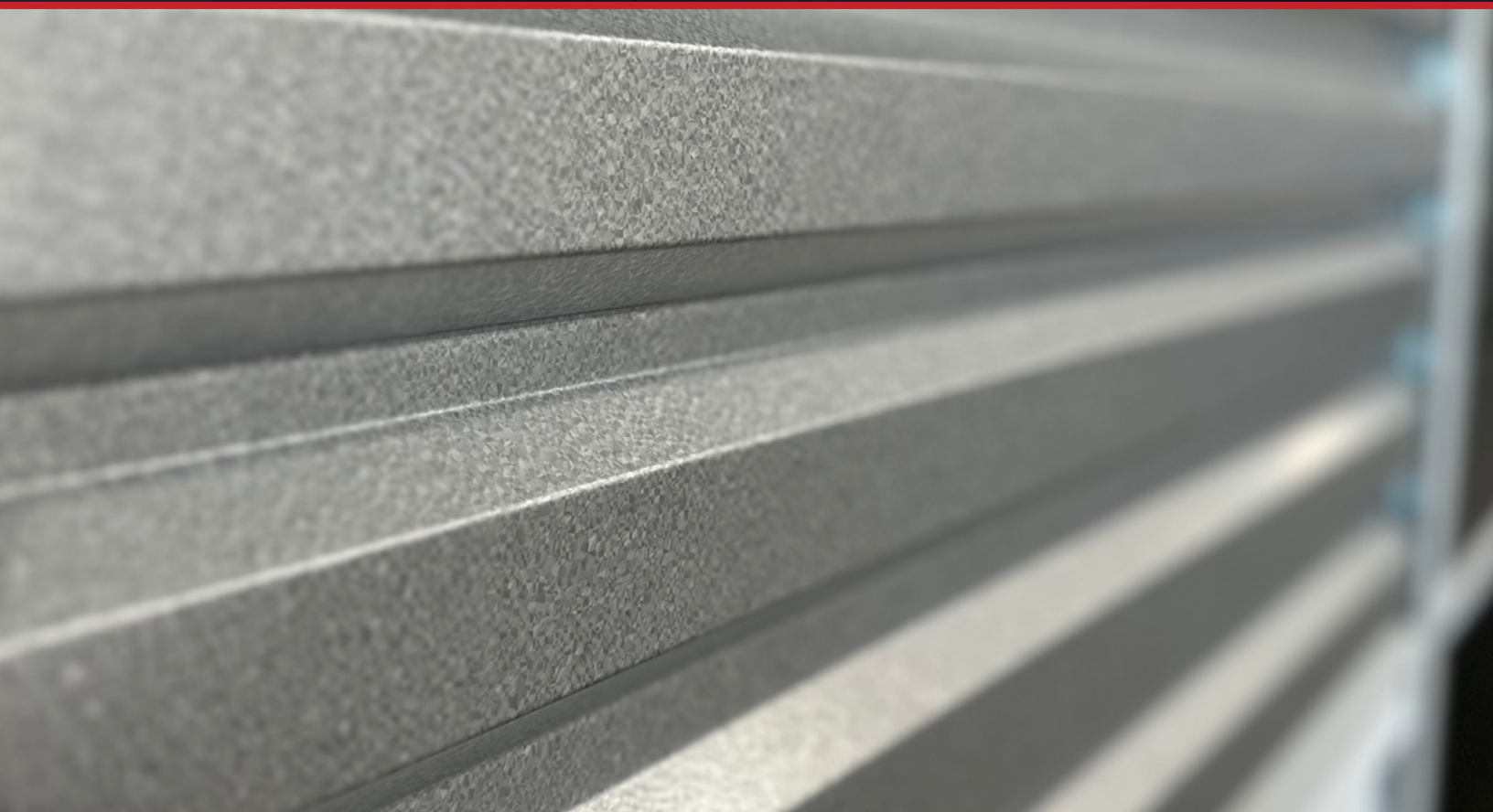


40 YEAR COATING WARRANTY

STRENGTH

VERSATILITY

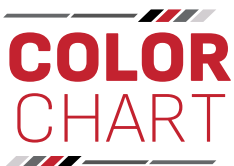
VALUE



STYLE ON REPEAT
WITH PROVEN PERFORMANCE

When you're looking for a seamless wall surface with tactile elements, Wave Panels are your go-to choice. Their versatility finds them as essential parts of commercial, industrial, retail, or even high-end residential projects.

You have the flexibility to install them either horizontally or vertically, creating a unified, visually appealing look.



| MAX POWER. MAX VALUE. | | | |
|--------------------------------|---|---------------------------------------|--|
| FEATURE/ASPECT | Wave Panel | R-Panel | Reveal Panel |
| DESIGN STYLE | <i>Contemporary/Modern</i> | <i>Industrial/Rustic</i> | <i>Minimalist/Architectural</i> |
| PRICE RANGE | <i>Mid-range</i> | <i>Affordable</i> | <i>Mid to High</i> |
| INSTALLATION COMPLEXITY | <i>Intermediate</i> | <i>Basic</i> | <i>Intermediate</i> |
| MAINTENANCE | <i>Low due to hidden fasteners</i> | <i>Easiest to maintain and repair</i> | <i>Low, given design quality</i> |
| ELEMENT PROTECTION | <i>Concealed Fastener, Fewer Entry Points</i> | <i>Exposed Fastener</i> | <i>Hidden Fastener, Overlap of Panel</i> |