

METAL EXTERIORS

CUSTOM METAL ROOFING AND SIDING

Color Selections

WeatherXL™



Brilliant White 29/26



Alamo White 29/26



Ash Gray 29/26



Light Stone 29/26



Taupe 29/26



Dark Green 29/26



Rustic Red 29/26



Dark Red 29/26



Burgundy 29/26



Gallery Blue 29/26



Tan 29/26



Brown 29/26



Burnished Slate 29/26



Pewter Gray 29/26



Charcoal 29/26



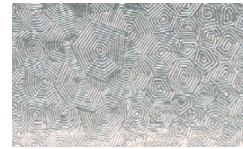
Matte Black 29/26



Metallic Copper 26



Brilliant White Liner 29



Acrylic Galvalume 29/26



Acrylic Galvanized 29



Brilliant White Textured 26



Alamo White Textured 26



Ash Gray Textured 29/26



Light Stone Textured 26



Taupe Textured 29/26



Buckskin Textured 26



Dark Green Textured 29/26



Rustic Red Textured 29/26



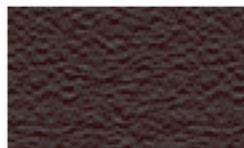
Burgundy Textured 29/26



Gallery Blue Textured 29/26



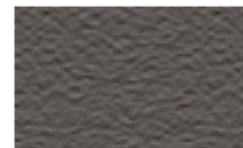
Silver Sage Textured 26



Dark Brown Textured 29/26



Burnished Slate Tex. 29/26



Charcoal Textured 29/26



Matte Black Textured 29/26



Rose Wood Print 26



Weathered Wood Print 26



Western Rust Print 26

SHERWIN-WILLIAMS®
Coil Coatings

Sherwin-Williams® is a trademarks of SWIMC LLC.

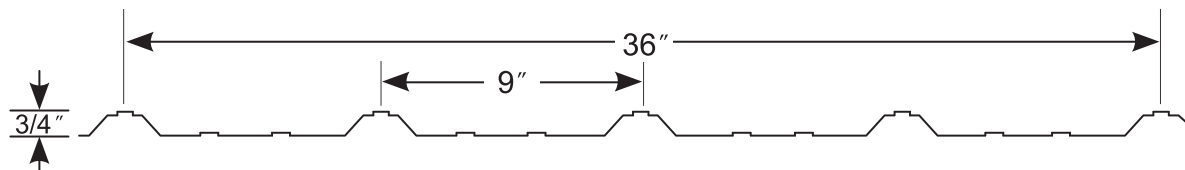
Colors shown may vary from actual paint.
Textured colors may vary between orders

29 = 29 Gauge 26 = 26 Gauge
Always check availability on 26 Gauge

PARALLEL RIB

Parallel Rib panel is a premium steel roofing system. It's a low profile metal panel, making it an excellent choice in both roofing and siding applications. It brings the value, quality, and durability of premium steel roofing, all at an affordable price.

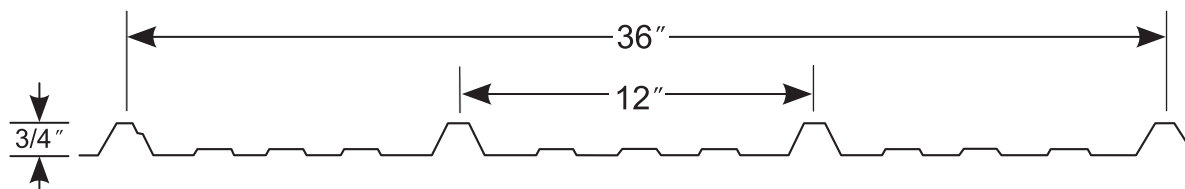
Available in
29 GA & 26 GA



ELITE RIB

Our Elite Rib panel was custom designed by our experts to bring a combination of visual beauty, style, and affordability. With a 12" on center rib, it gives the look and feel of standing seam roofing but keeps your cost down.

Available in
29 GA & 26 GA

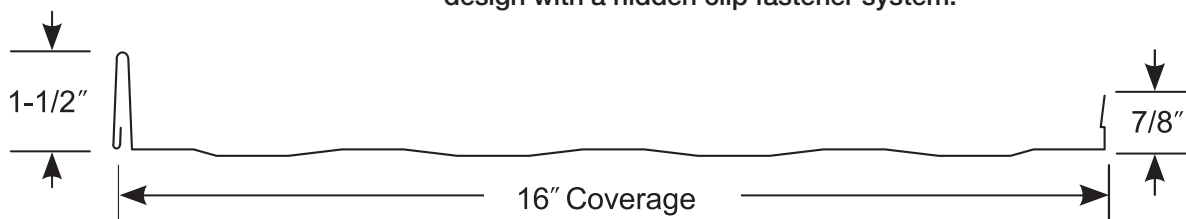


METAL-LOC 1.5

Metal-Loc 1.5 panel is the ultimate choice for a beautiful, long-lasting standing seam roof. These stylish and durable panels are perfect for residential, agricultural, and commercial roofing. Metal-Loc 1.5 features a Snap Lock design with a hidden clip fastener system.

Available in
26 GA

(24 GA in select
colors also
available upon
request)



METAL BATTEN

Vertical Steel Siding

Metal Batten siding panel is the essence of old-style wood with new-age technology. With its bold 3/4" x 2" batten and 10" coverage, it creates a realistic look of wood board & batten siding without the hassle of painting maintenance. With custom lengths from 3' to 20', board and batten metal siding creates a seamless look with less waste than vinyl.

Available in 26 GA
textured paint only

